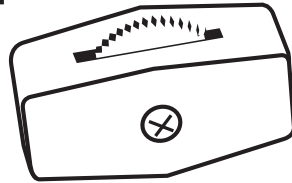


Works for Jandorf Lamp Cord Switches:

#60180 - Brown
#88920 - White

What's Inside

1 - Lamp Cord Feed-Through Switch.
3A-250V; 6A-125V; 3A-125VT.



What's Its Purpose

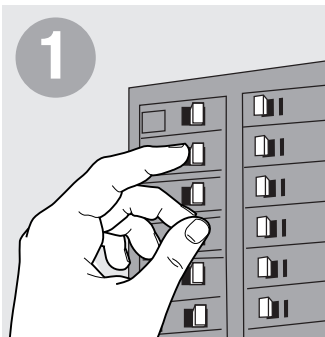
Turning lamp on and off.

What's Needed

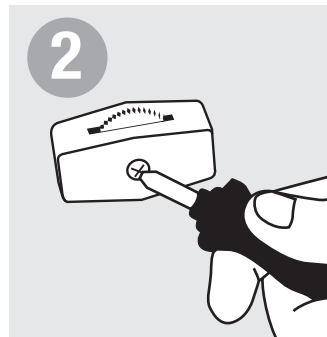
Screwdriver
Knife
#18 SPT-1 Lampcord

Warning

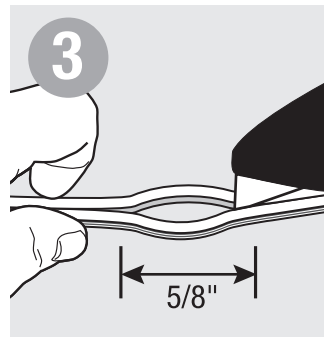
- Before beginning **TURN OFF POWER** to the light from fuse or circuit breaker, or unplug lamp from wall outlet.
- Follow local electrical regulations or codes when installing and using this product.
- **CAUTION:** To reduce the risk of fire or electric shock, do not strip wires – Cut off end of cord cleanly.
- Deviation from the assembly instructions may result in a **risk of fire or electric shock.**
- Max ambient air temp. 50°C (122°F) at switch site.



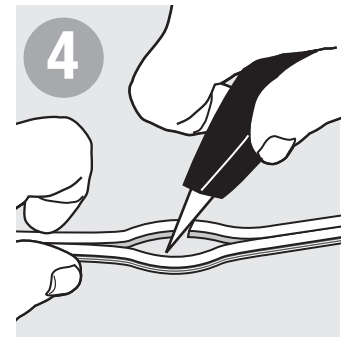
1
TURN OFF POWER to light from the fuse or circuit breaker or unplug lamp from wall outlet.



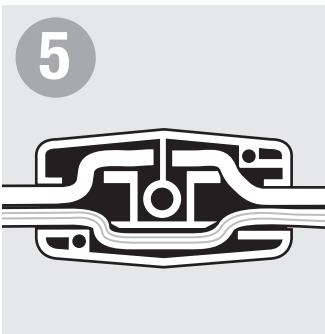
2
Unscrew nut to separate switch.



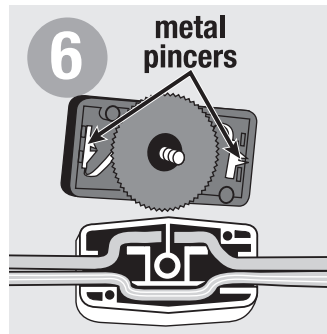
3
Where switch is to be located, cut 5/8" slit through insulation between conductors. Do not expose wire.



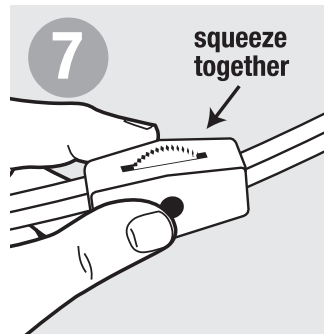
4
Cleanly cut non-ribbed wire in half at center of slit. Do not strip wire.



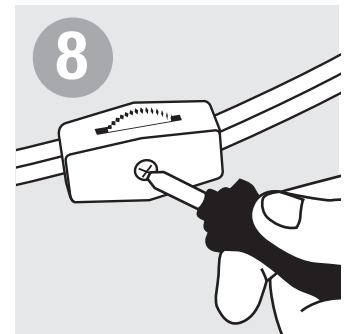
5
Place uncut ribbed cord in open channel of hollow half of switch. Tuck two cut ends of non-ribbed cord into top portion.



6
When switch halves are combined, cut portion of wire should contact metal pincers.



7
Place two switch halves together until they touch.



8
Replace screw; securely tighten nut.